

WiFi Alliance certification recommends WPA2 AES to be the security mechanism under 11N mode. System driver will automatically bring down wireless data rate to 54Mbps if other security method such as WEP or WPA is used under 11n mode.

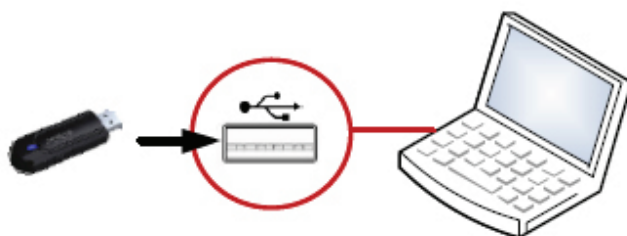
To fully utilize 11N capability, you are recommended to disable security setting or change it to WPA2 AES if your 11N router is using other security mechanism. This policy has no effect if connecting with b/g only wireless access point.

### Step 1

1. Insert the installation CD in the CD-ROM drive, CD-Menu will start.
2. Click Driver / Utility page and then click for Windows OS or Mac OS to start the installation and follow the instruction on your screen.
3. After the setup wizard has finished remove the CD-ROM and shut down the computer.

### Step 2

1. Insert the Wireless USB adapter into a free USB slot.
2. Start the computer.
3. After Windows has restarted it will detect new hardware. The drivers for the card will be automatically in



### Step 3a (Connecting to a WPS secured network)

1. Press the WPS button on your router:
2. Open the Wireless LAN Utility and click on the Tab WPS.

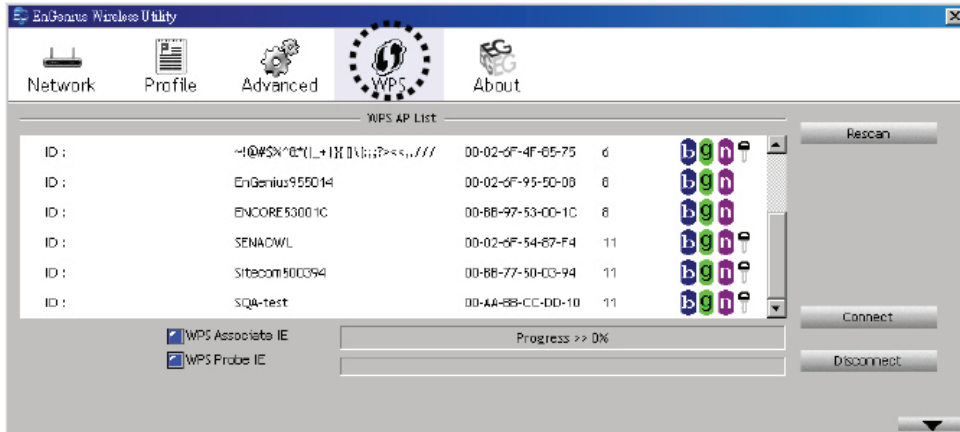


STEP 1



STEP 2

3. Click on the WPS button, the WPS association will now start.



4. Wait till the Association has finished.

5. The wireless adapter will try to connect to the selected network. If the connection attempt is successful the configuration utility icon will change color to blue.



### Step 3b. (Connecting to a wireless network without WPS)

**Note:** If you've created a connection according to step 3a, this step can be skipped.

1. After installing the software, the wireless configuration utility icon will show up the icon tray.

2. Double click on the configuration utility icon.

3. Click Site survey and then click the Rescan button.

4. The wireless adapter will now search for the available networks in the area.

5. Select the network you wish to connect to and click Add to Profile.

6. You will see a new screen, fill in the data required and click "Ok", now select the Profile and click "Activate". The wireless adapter will try to connect to the selected network. If the connection attempt is successful the configuration utility icon will change color to blue.

